

HGC SUPERHUB HOSTED EXCHANGE EMAIL

OUTLOOK 2010 – IMAP SETUP GUIDE

MICROSOFT HOSTED COMMUNICATION SERVICE V2013.5

Table of Contents

1.	Get Started	1
1.1	Start from Setting up an Email account	1
1.2	Start from Setting up Multiple Profiles of Email accounts.....	2
2.	Add New Account.....	4
3.	Get Help and Support.....	9

The guide is to describe how to set up Outlook 2010 using IMAP.

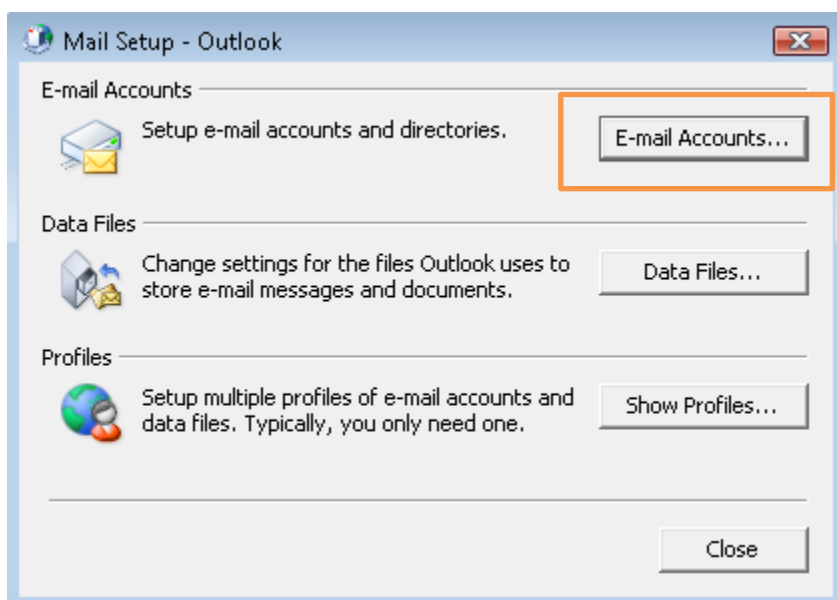
1. Get Started

1.1 Start from Setting up an Email account

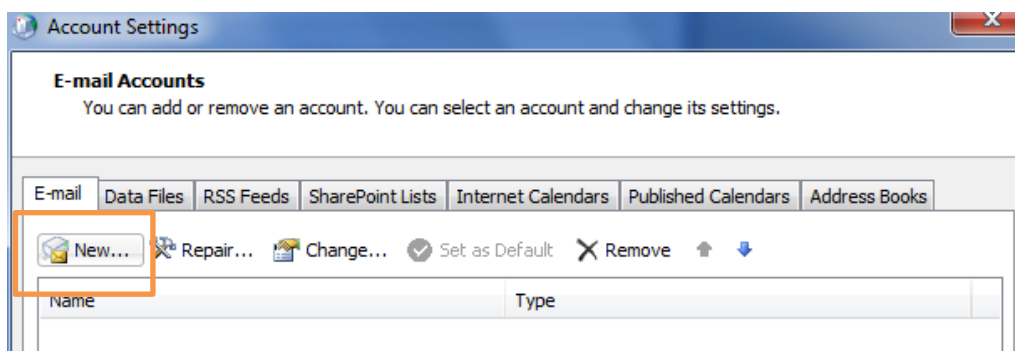
If you start from setting up an **Email account**, please go through the following steps. If you start from setting up a **Profile** of email accounts, please go to **1.2**.

Step 1: Click **Start**, Click **Control Panel**, and open **Mail**
Then you will have the following screen.

In the Mail Setup dialog box, click **E-mail Accounts**.



Step 2: In the Account Settings windows, click **New**.



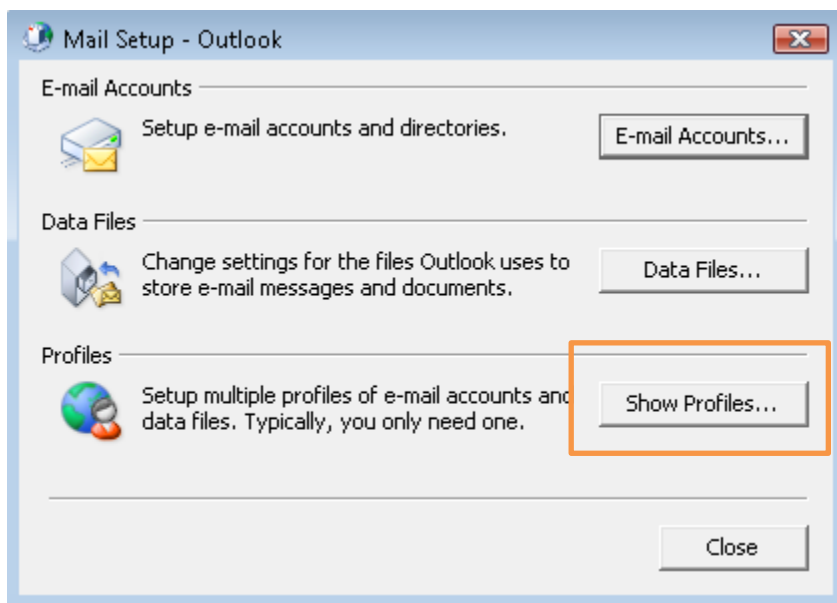
Step 3: Please skip point 1.2 and go to point **2. Add New Account**.

1.2 Start from Setting up Multiple Profiles of Email accounts

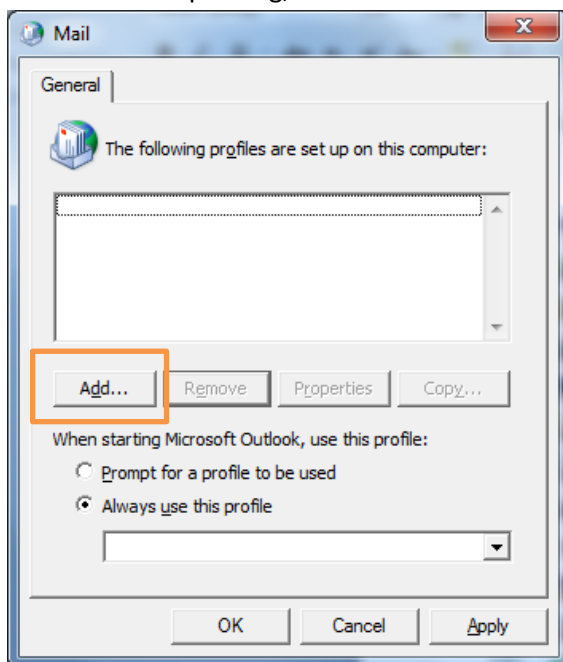
If you start from setting up an **Email account**, please go to 1.1. If you start from setting up a **Profile** of email accounts, please go through the following steps.

Step 1: Click **Start**, Click **Control Panel** ,and open **Mail**
Then you will have the following screen.

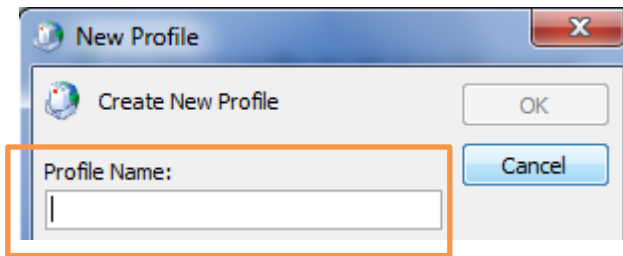
In the Mail Setup dialog box, click **Show Profiles**.



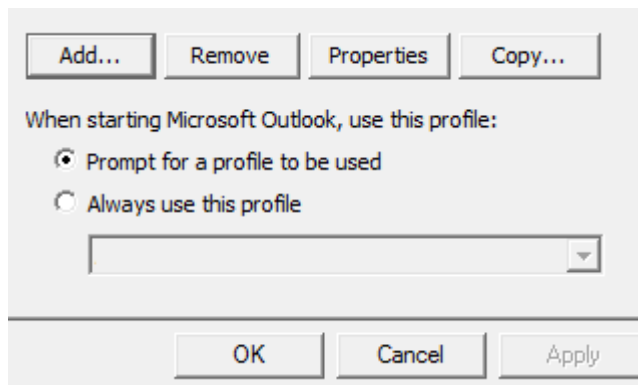
Step 2: In the Mail Setup dialog, click **Add**.



Step 3: Give it a New **Profile Name**, and then click **OK**.

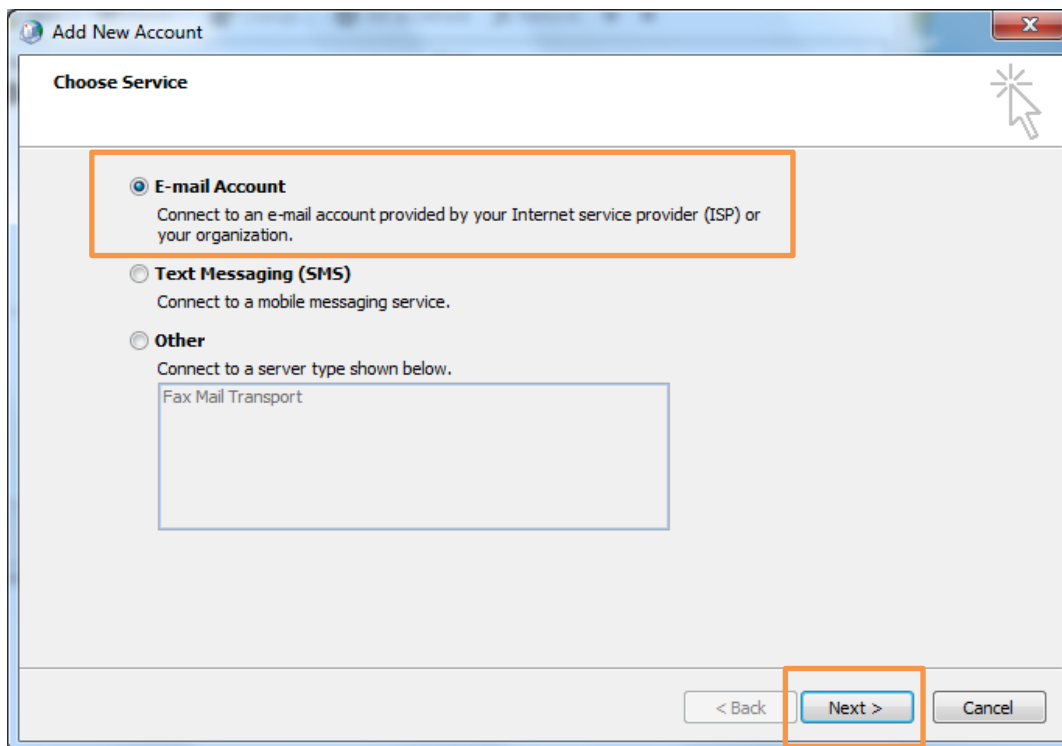


*Remark: you may add more than one Profile and check **Prompt for a profile to be used** such that whenever a user starts Outlook, a prompt of Profile Selection will be provided.

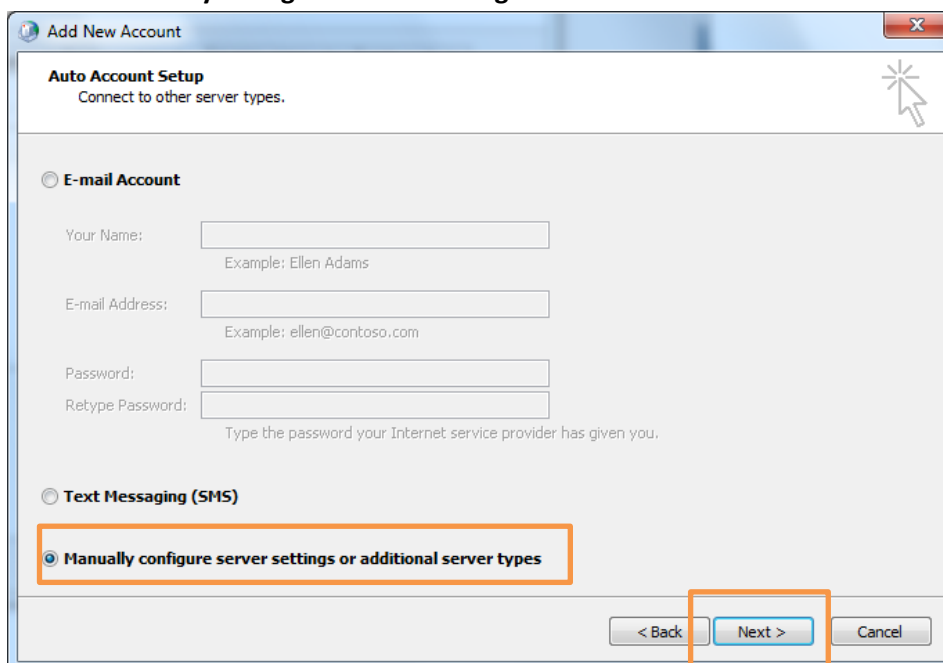


2. Add New Account

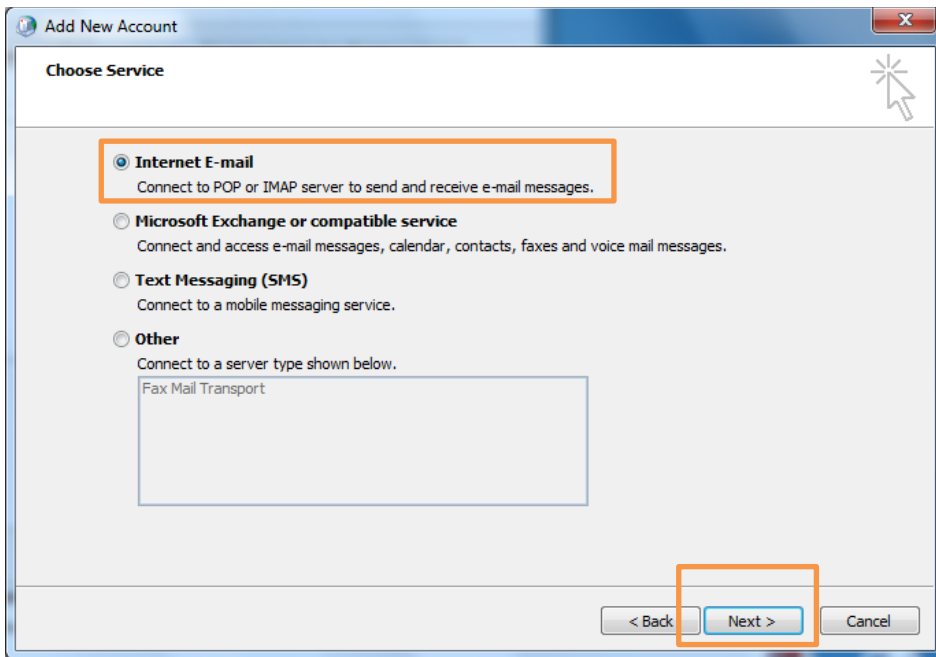
Step 1: Choose **Email Account**. Then click **Next**.



Step 2: Choose **Manually configure server settings**. Then click **Next**.



Step 3: Choose **Internet E-mail**. Then click **Next**.



Step 4: An **Add New Account** window prompted up. Then fill in the following items:

Your Name: User's Name

E-mail Address: User's email address

Account Type: IMAP

Incoming mail server: imap.hgcbizmail.com

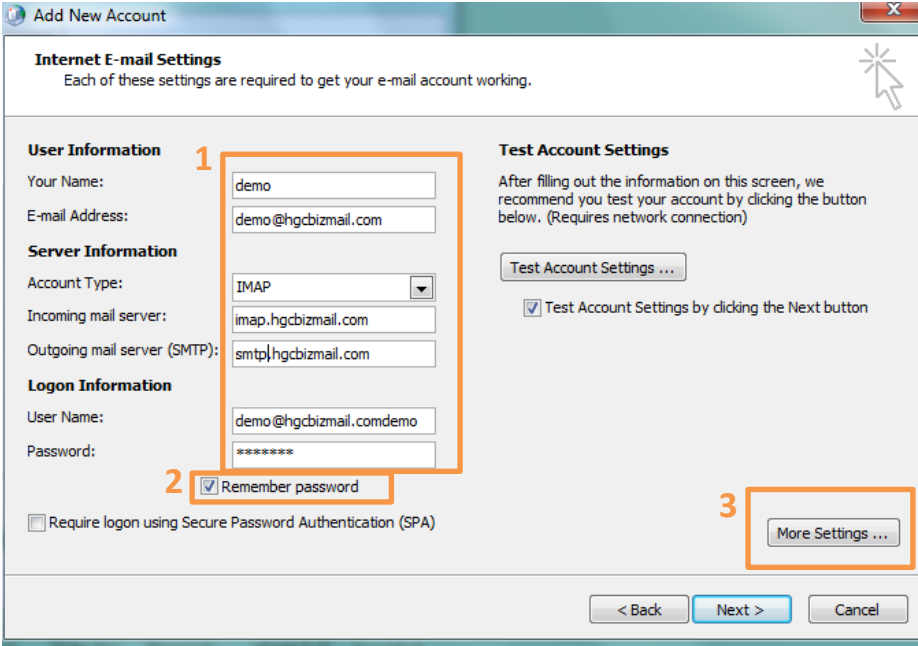
Outgoing mail server (SMTP): smtp.hgcbizmail.com

User Name: User's email address

Password: User email login password

TCP port 587 with SMTP Auth

Then check the **Remember password** box. Then click **More Settings**.



Internet E-mail Settings
Each of these settings are required to get your e-mail account working.

User Information

Your Name: demo

E-mail Address: demo@hgcbizmail.com

Server Information

Account Type: IMAP

Incoming mail server: imap.hgcbizmail.com

Outgoing mail server (SMTP): smtp.hgcbizmail.com

Logon Information

User Name: demo@hgcbizmail.comdemo

Password: *****

Remember password

Require logon using Secure Password Authentication (SPA)

Test Account Settings

After filling out the information on this screen, we recommend you test your account by clicking the button below. (Requires network connection)

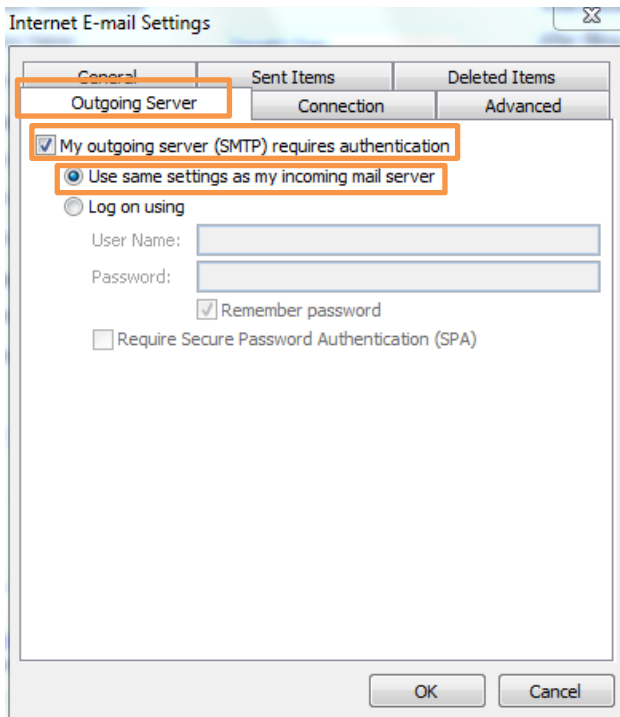
Test Account Settings ...

Test Account Settings by clicking the Next button

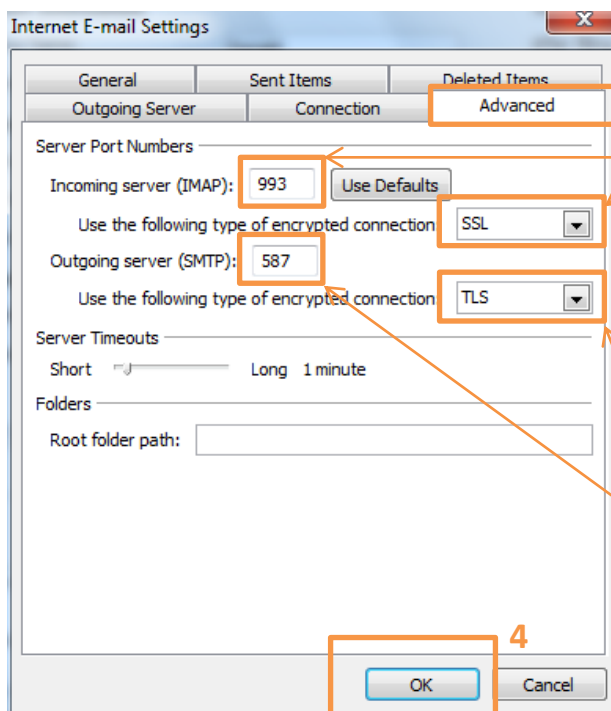
More Settings ...

< Back Next > Cancel

Step 5: Click **Outgoing Server** tab. Check **My outgoing server (SMTP) requires authentication** box and choose **Use same settings as my incoming mail server**.



Step 6: Click **Advanced** tab.



2 With encryption > fill in the Incoming server (IMAP) as **993** and choose the encrypted connection as **SSL**.

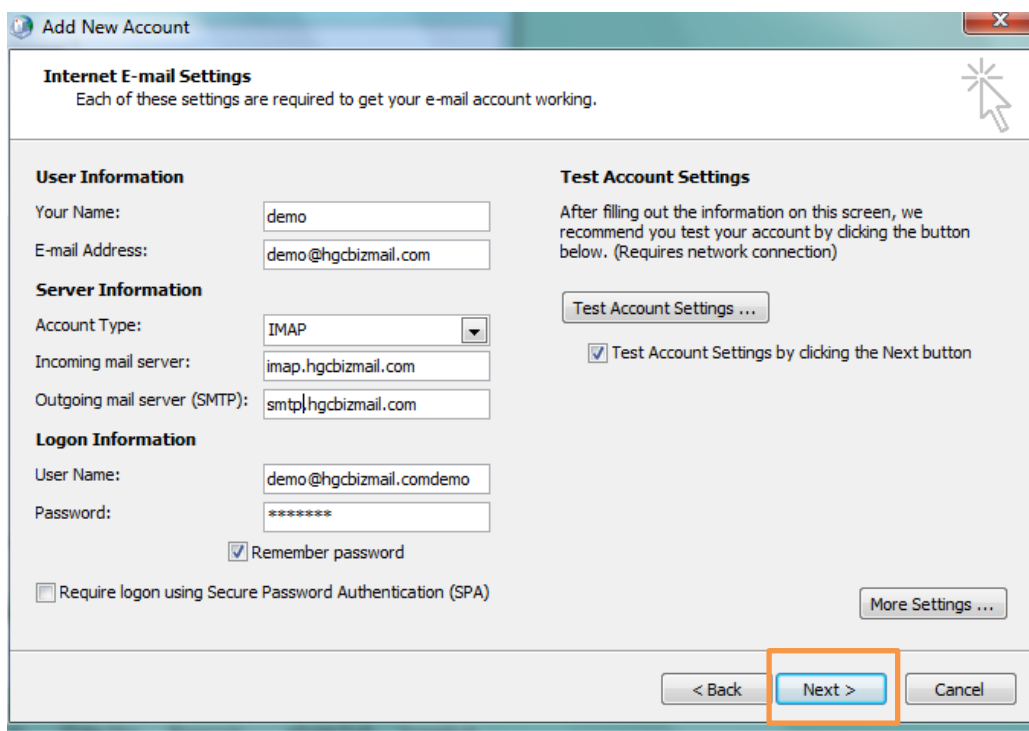
OR

No need encryption > fill in the Incoming server (IMAP) as **143** and choose the encrypted connection as **None**.

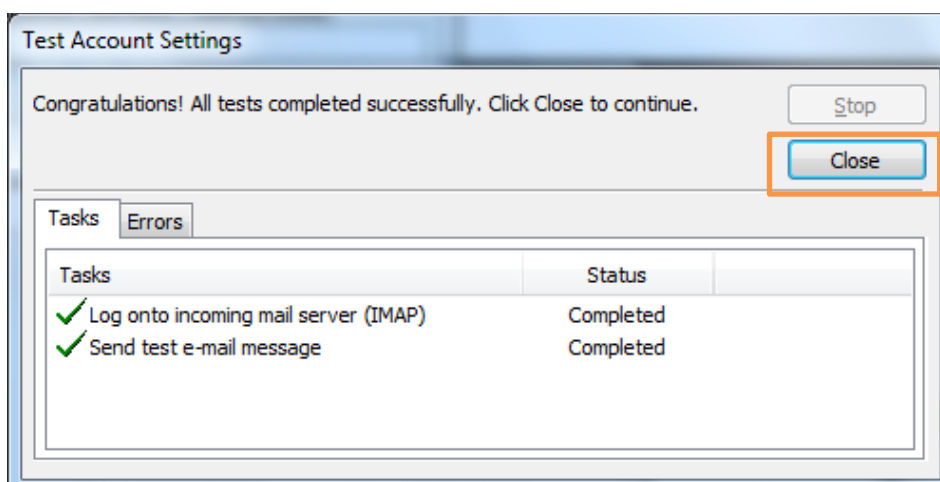
3 Fill in the Outgoing server as **587**. And choose the encrypted connection as **TLS**.

Then click **OK**.

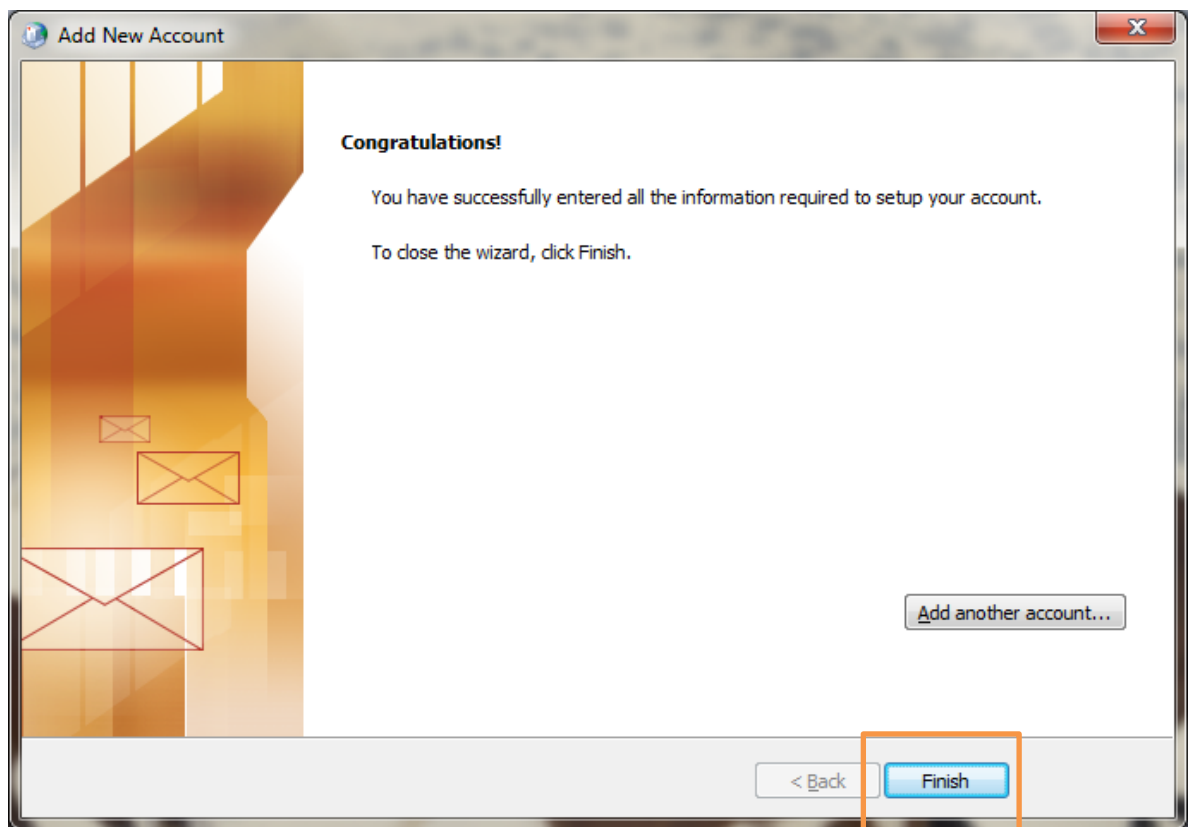
Step 7: Click Next.



Step 8: A testing account setting window will be prompted. Wait for a moment until the Test is completed. Then click **Close**.



Step 9: Click **Finish**. Congratulations you have finished setup an IMAP account



3. Get Help and Support

We are glad to assist you with any enquiry or issue on the setup and use of service. Please contact our Support team via phone at 3160 3160.