

## I. Dynamic IP Address Configuration Procedure

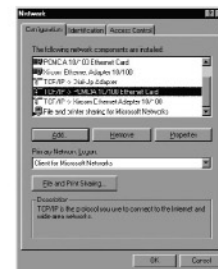
IP address will be assigned dynamically during this configuration. Please follow the steps below for dynamic IP configuration.

### 1. Windows 98 or Me

- 1.1 Click "Start" button → "Setting" → "Control Panel". "Control Panel" window will display.



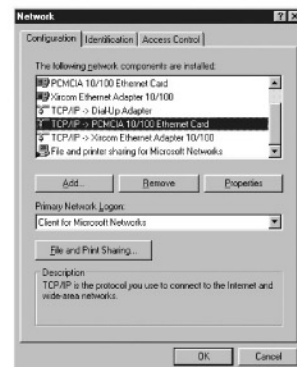
- 1.2 Double click: "Network" icon. "Network" window will display.



Windows 98 / Me

P.30

- 1.3 At the "Configuration" tab, Choose "TCP/ IP -> Your Network Card". Then press "Properties"



- 1.4 In the "TCP/ IP Properties" window:
  - i. Select the "IP Address" Tab.
  - ii. Choose the field of "Obtain an IP address automatically"
  - iii. Press "OK"



- 1.5 In the "Network" window, Click "OK". Restart your computer.

Windows 98 / Me

- End -

P.31

### 2. Windows 2000 or XP

- 2.1 Click "Start" button → "Setting" → "Control Panel". "Control Panel" window will display.



- 2.2 Double click: "Network Connections" icon. "Network Connections" window will display.



Windows 2000 / XP

P.32

2.3 Double click "Local Area Connection" icon and press "Properties".  
Then "Local Area Connection" windows will display.

2.4 At the "General" tab, choose  
"Internet Protocol (TCP/IP)"  
and press "Properties".



2.5 In the "TCP/IP Properties"  
window, choose the field of  
"Obtain an IP address  
automatically" and "Obtain DNS  
server address automatically".  
Then press "OK"



2.6 In the "Network" window, click  
"OK"