

I. Dynamic IP Address Configuration Procedure**1. Pre-installation Preparation**

Before installing "HGC Broadband PPPoE Dialer", you need to ensure the followings are well prepared:

- Network card is installed
- TCP/IP has been set-up
- Network cable is firmly connected to the network card of your computer
- All Anti Virus program has been disabled
- All existing PPPoE Dialer has been removed

P.38

2. Windows 95 / 98 / 2000 / ME / NT4.0 SP4

1. Insert the CD into CD-ROM drive, the setup menu will automatically pop up, then click the "Install EnterNet PPPoE".
 - * If the program fails to run automatically after the CD is inserted in the CD-ROM. You can also choose another location path by clicking on "Browse" to open the "EnterNet" folder.
2. Find the "Setup" program and double click to run it.



3. If your computer shows the right screen, click "Run this computer from its current location" and press "OK".



If your computer shows the right screen, click "Open".



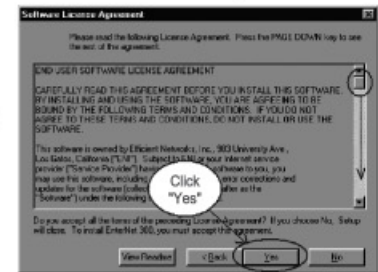
4. Select "Step-By-Step Install (let me choose my settings)" and click the "Next" button.



5. Click "Next" again to read the Software License Agreement.



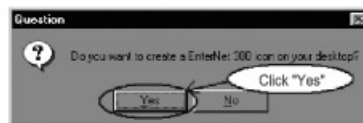
6. Read through the Software License Agreement carefully. If you agree to the terms stated, click "Yes" to continue the installation process.



7. Click "Next" to install the dialer software in the default folder, or click "Browse" to choose another folder.



8. Now click "Yes" to create a shortcut on the desktop.



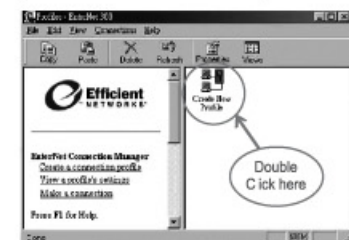
9. To restart the computer before the setup program is put to function, choose "Yes" and then click "Finish" to confirm the setting.



10. After the computer is booted up, there should be an "EnterNet 300" icon on the desktop. Double click the icon to continue the installation.



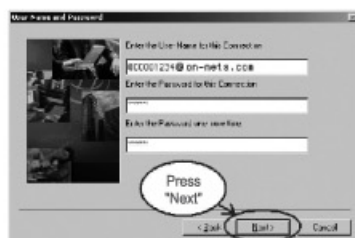
11. Double click "Create New Profile".



12. Type "HGC" for the profile, and then press "Next".



13. Enter "Circuit Number@on-nets.com" as the user name, "Account Number" as password and retype again, then press "Next".



* The information of the "Circuit Number" and the "Account Number" are listed in P.59.

14. Now press "Next" to go to the "Locate Servers" screens. Leave everything as default.

15. Press "Finish" to create the profile.



Windows 95 / 98 / 2000 / ME / NT4.0 SP4

P.45

16. Now a profile is created. You may drag the profile icon to the desktop for easy access.



17. If you want to make the connection, please double click the profile icon and press "Connect".



18. When a connection is successfully made, the System tray will show a green connection icon.



Windows 95 / 98 / 2000 / ME / NT4.0 SP4

P.46

19. You have now successfully connected to the network. For disconnection, double click the connection icon on the system tray and then press "Disconnect".



20. For detail user operation instructions, you can consult the help file at the following path in your computer:

C:\Program Files\Efficient Networks\EnterNet 300\app\EnterNet.hlp

Windows 95 / 98 / 2000 / ME / NT4.0 SP4 - End -

P.47

3. Windows XP

Set up of built-in PPPoE Internet Connection for HGC Broadband (For Windows XP Home and XP Professional Only)

1. Please click the "Start" menu, and then click the "Control Panel" item to open the Control Panel.

Screen shot from Windows XP Professional (Classic View)



2. In the Control Panel, please click the "Network Connections" item to continue.



Windows XP

P.48

3. Please click the "Create a new connection" item from the "Network Tasks" window to continue.



4. Then click "Next".



5. And select "Connect to the Internet", then click "Next".



6. At the "New Connection Wizard" window, select "Set up my connection manually" and then click "Next".



7. Select "Connect using a broadband connection that requires a user name and password" and click "Next".



8. Type "HGC Broadband" in the field of "ISP Name", and then click the "Next" button to continue.



9. Please enter "Circuit Number @on-nets.com" in the field of "User name" and "Account Number" in the field of "Password" and "Confirm password".
* The information of the "Circuit Number" and the "Account Number" are listed in P.59.



10. Click to enable the "Add a shortcut to this connection to my desktop" option, and then click the "Finish" button to complete the setup.



On-Demand (PPPoE) Configuration | Dynamic IP

11. After creating the New Connection, there should be a "HGC Broadband" icon on the desktop. Double click the icon to continue the installation.



12. Login as "Circuit Number@on-nets.com" to register your own user name & password online.



13. When a connection is successfully made, the system tray will show a connection icon.

